

# Let's go bug hunting

## HOW MANY CAN YOU FIND?



Peacock butterfly



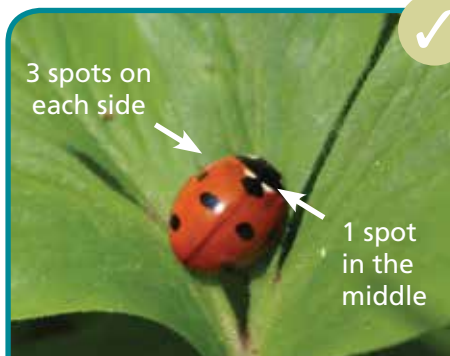
Red admiral butterfly



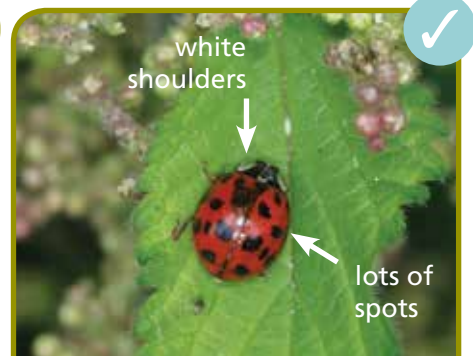
Cinnabar moth



Shieldbug



7-spot ladybird



Harlequin ladybird



Bumblebee



Marmalade hoverfly



Garden spider



Woodlouse



1 pair of legs on each segment

Centipede



2 pairs of legs on each segment

Millipede

# Let's go bug hunting

## HOW MANY CAN YOU FIND?

Bugs are *invertebrates* – animals that do not have a backbone. They are really important. Some bugs, like bees, wasps and hoverflies, are pollinators. They carry pollen between flowers. Other bugs, like woodlice, earthworms and flies, are recyclers. They help break down dead plant and animal material. Many bugs are food for mammals and birds.

### Bug hunting in gardens and parks: can you find all 12 bugs?

A warm and sunny day is best. Bugs are easiest to spot between 10.00 am and 3.00 pm. Don't forget to tick the photo of the bug when you find it. How many bugs will you find?

Here are some places that you could look...



...on flowers



...on leaves and stems



...in long grass



...under logs and stones



...under plant pots



...among dead leaves



### Want to find out more about wildlife?

FSC has lots of different wildlife guides to help you find out more about nature. Why not try our *Guide to garden bugs and beasties* or set yourself the challenge of our *Nature Spotters* books?

[www.field-studies-council.org/publications](http://www.field-studies-council.org/publications)

